

SA saxo 3 and 7 active

User guide in English

vers. 5 .eng



Read the user guide and get 20% better sound

You are the owner of one of the best wireless speakers on the market. This user guide can help you to get a 20% better sound than if you simply connect up the speakers, so take a moment to read it.





Welcome

Thank you for choosing SA.
I am responsible for the technology in
the speakers and here you get
help to get started.

The package contains two speakers, a
remote control, a speaker cable, a power
cable and a user guide.

Read the user guide and note the points
highlighted with **TIP**.

Follow these and you will get the full benefit
from your new speakers.

Use SA's offer of a free 7-year warranty
and register your speaker on our website
(under customer service).

If you have any questions you are welcome
to write to us on facebook.

We will respond quickly.

Enjoy.

Ole Witthøft

Collect your audio experiences

With wireless SA speakers in the living
room, you can collect your audio
experiences in one place.

The speakers can be connected to
anything from your computer, television,
games console or iPod and you can
hear high quality music from your
wireless devices via Bluetooth.

SA saxo active consists of two
speakers. One active and one passive.
The active one must be connected to
the devices you want to listen to and is
connected to 230 V.

The two speakers must also be
connected to each other with the
supplied cable.



On or standby

Blue light means the speaker is on.

Orange light means standby.

Orange light flashing means
standby, with auto-sense on.

TIP. The speaker goes into standby
after about 20 minutes with no signal.

Bluetooth indicator

The white light to the right indicates the
speaker's Bluetooth.

Flashing light. The speaker is
searching for other Bluetooth devices

Steady light. The speaker is paired with
a Bluetooth device

No light. The speaker is not using
Bluetooth input.

Good to know about the speaker

Button with three functions

Turn. Increase or decrease the volume .

Short click. Switch between inputs

Longer pressure. Turn speaker on
or put it in standby .

TIP. You can turn the speaker on by
pressing the button through the fabric at the
front of the speaker .

Auto-sense

When SA saxo active receive signal at an
input while it is turned off (incl bluetooth) it
switches on automatically, and switches to
the correct input.



How to connect devices to the speaker

Follow the arrows around the speaker. Start here.

You can connect up to four devices that use cables, and an unlimited number of wireless devices using Bluetooth.

See here how you connect the different devices.

TIP The active speaker (the one you see here) should be placed to the left when you look at your speakers from the front.

Connect Chromecast, TV, DVD, Blu-Ray or games console

The optical inputs OPT1 and OPT2 give clear sound from digital media.

Connect Turntable (mm)

The analog input RCA accepts phono jacks.

Ground connection for a turntable

Adaptive bass

Increase bass level when playing at low volumes

The active speaker should be placed to the left when you look at your speakers from the front.

Wireless connectivity with Bluetooth

See how on the back.

Wall bracket

Hang the speakers on the wall and fit wall bracket W.5 here

Speaker-to-speaker cable

Here the supplied white cable connects the two speakers with each other.

Note that the cable has one square head and one round head.

Insert the tip of the square head into plus (red) and the round head into minus (black) on both speakers.

The transparent connections loosen when you turn them anti-clockwise.

There is space for the tip of the cable through the metal part of the connection.

Insert a cable into each connection and tighten firmly.

TIP You can use a longer cable, if you wish.

Active subwoofer

Here you can connect an active subwoofer.

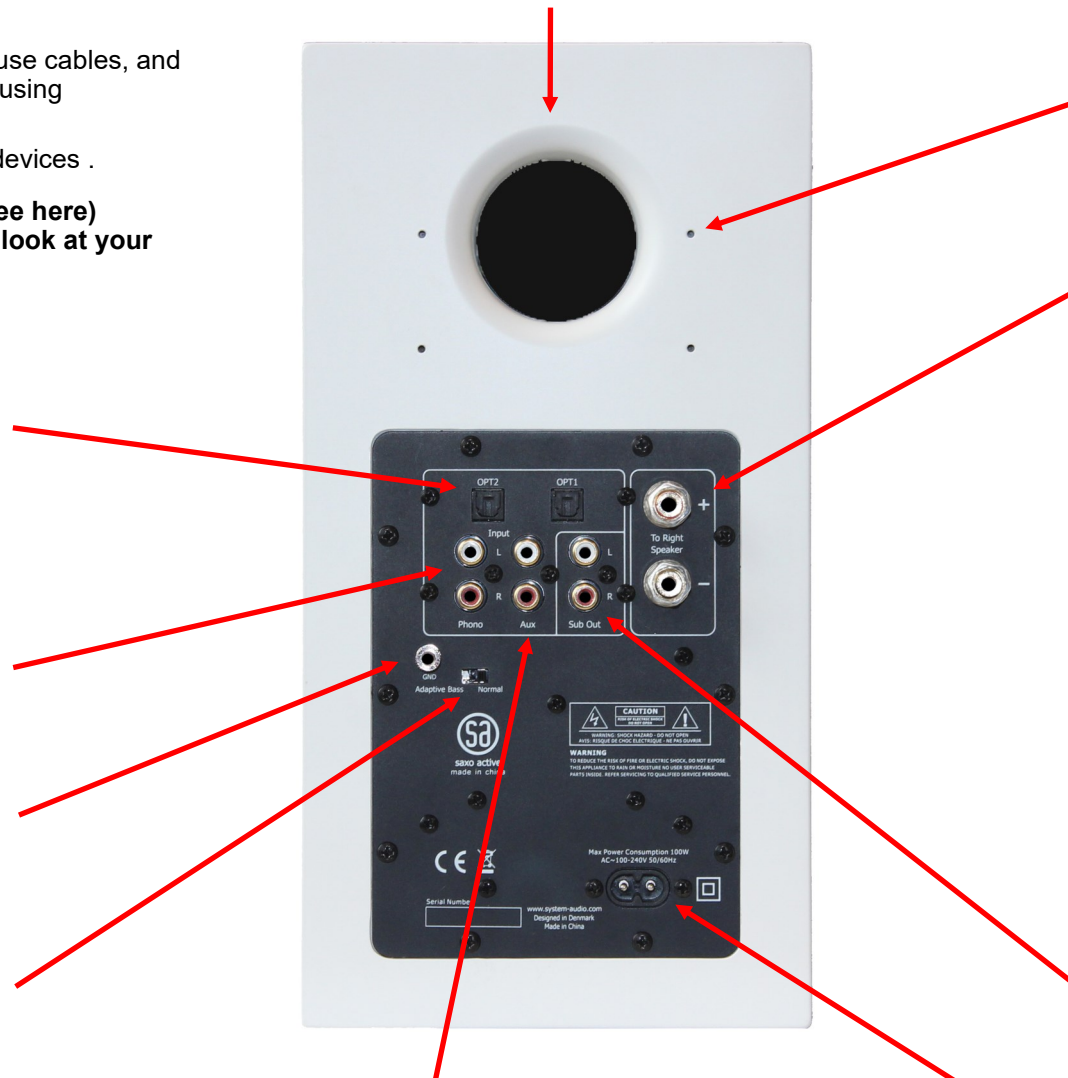
IEC input connector

Here you connect the supplied power cable.

Connect a computer or similar.

The analog input RCA accepts phono jacks. connects a computer, iPod or similar.

TIP Computers are generally not good with Bluetooth. It is better to connect them to the speakers with a cable.





How to get our 7 year factory warranty

Register your product on www.system-audio.com to get a free 7 year factory warranty.

The factory warranty covers returning the item to the nearest dealer, and does not include collection and delivery.

The warranty covers manufacturing defects and includes parts and labour. The warranty does not cover wear and tear, misuse, incorrect connection, damage during transport resulting from poor packaging, professional use, inadequate maintenance or if modifications have been made to the product.

The warranty is only valid on presentation of proof of purchase with information about the model and the serial number.

facebook

Do you have questions or need any help?

Ask our experts on Facebook and get a quick answer.
Visit us: www.facebook.com/SystemAudio

Setting up the speakers

TIP. It is important that the speakers are placed where they sound best. Try to keep them 1.5 - 2.5 meters apart and place them at the height of your ears when you are in your favourite listening position.

Operating the remote control

1. Stand by - Press for stand by
2. Mute

Bluetooth Button

3. Activate to search for other Bluetooth devices

Input Options

4. Bluetooth input selector
5. Phono input selector
6. RCA input selector
7. Optical 1 input selector
8. Optical 2 input selector

Multi functions

9. Turn volume up
10. Turn volume down
11. Play previous (Bluetooth)
12. Play next (Bluetooth)
13. Play / Pause (Bluetooth)



How to connect the speaker via Bluetooth (pairing)

1. Press the remote control standby button and turn on the speakers. Then press the Bluetooth button. The white Bluetooth indicator will then flash slowly to show the speaker is ready. (If it is lit constantly, the speaker is connected to a device that it has previously been connected to)
2. Get your Bluetooth device to search for a new device. Select 'SA saxo active' in the list of found Bluetooth devices.
3. When the connection has been set up, the white Bluetooth indicator will light continuously. You will not need to pair the device again. SA saxo active will stay on the device list.
4. If there is no connection: turn off the speaker at the main switch at the back and repeat steps 1 and 2.
5. When the devices are connected, you can control playback using the remote control or the unit.



Technical specifications

Bluetooth 4.0 lossless aptX
AAC (Apple), WAV,
MP3 320 kbps
2 optical digital
1 turntable input
1 analog stereo RCA
Auto-sense

Output

2 x 40 watt class D
Subwoofer output

The iPod, iPhone and iPad are trademarks of Apple Inc.
The Bluetooth® mark and logos are registered trademarks owned by Bluetooth SIG, Inc., and System Audio A/S uses the marks under license.

www.system.audio.com

