

## Quick guide for SA legend silverback and the Stereo Hub

Follow this short guide and get wireless high definition sound

### 1 Unpack and connect.

Unpack both speakers, hub and connect them to power. Unpack and put batteries in the remote control.

Wait 20 seconds to continue.

### 2 Pairing the remote control.

Press and hold the pairing button on the back of the stereo hub for 6 seconds until the LED starts flashing.

Press any button on the remote control, wait for LED on the hub to stop flashing. Now the remote control and hub is paired.

(The LED will flash when a button on the remote control is pressed.)

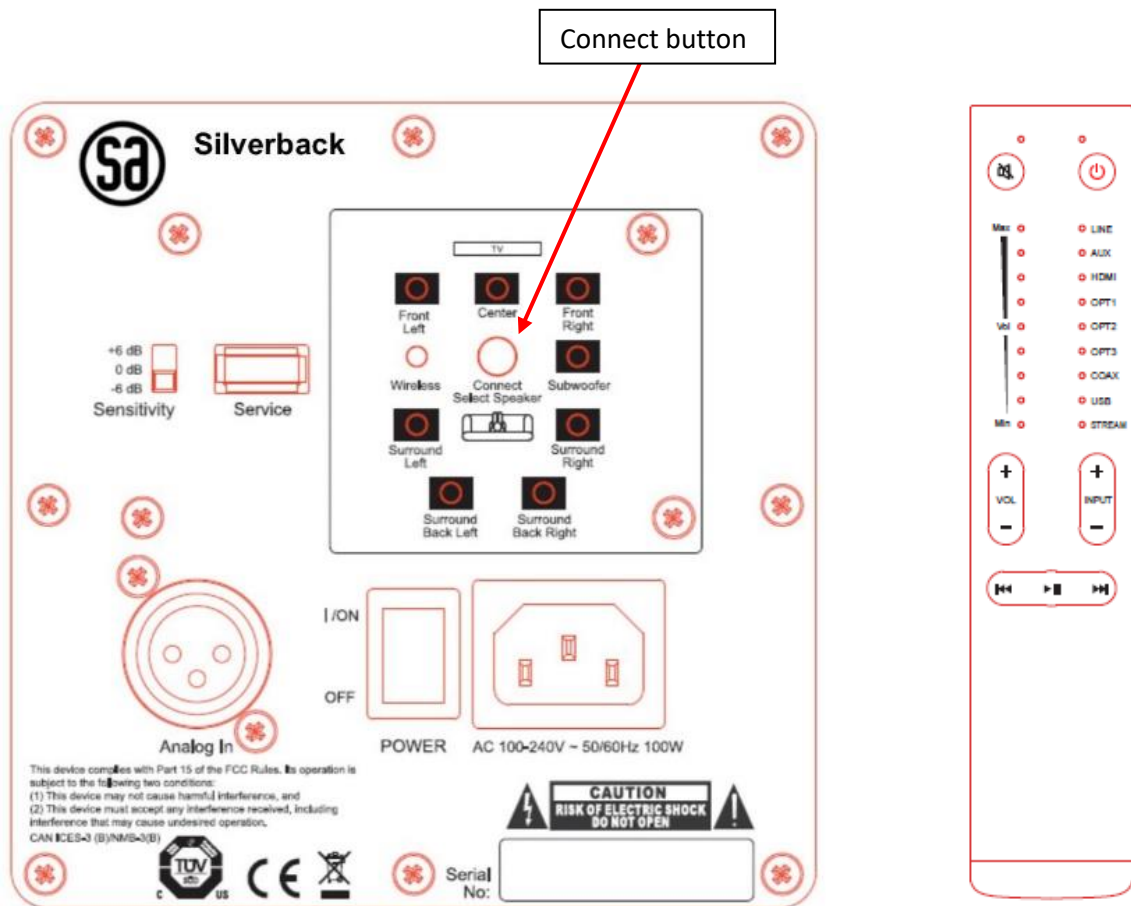
Set the volume indicator at 3 LED's, on the remote control. And select the stream input.



### 3 Pairing the speakers.

Press the connect button on the speakers for 2 seconds, one speaker at a time. The wireless LED will start to flash.

Press the pairing button on the hub for max 2 seconds. The wireless LED on the speaker will stop flashing, when the connection is established. And the WISA LED will light steady.



**4 Setting the speaker position** Click the connect button on the speaker, until the LED shows the correct speaker position.

**5 Open Google Home app on your smartphone or tablet.** For Apple users: Download the app from App Store.

If you want to use AirPlay, you will still need Google Home for set up.

**6 Note.** In some setups, you will need the name and password for your Wi-Fi network. Use a 2.4 GHz network.

**7 Connect the Stereo Hub to Wi-Fi.** Follow Google set up guide, on your Android or Apple device. When the guide is completed, the wireless set up is completed.

The default name of the hub is (Hansong Platin)

You can also connect cabled devices to your hub. Find information in the user guide at this location <http://www.system-audio.com/brochures-and-manuals/>

Enjoy your new speakers.

See the user guide for the speakers, to read about speaker placement.